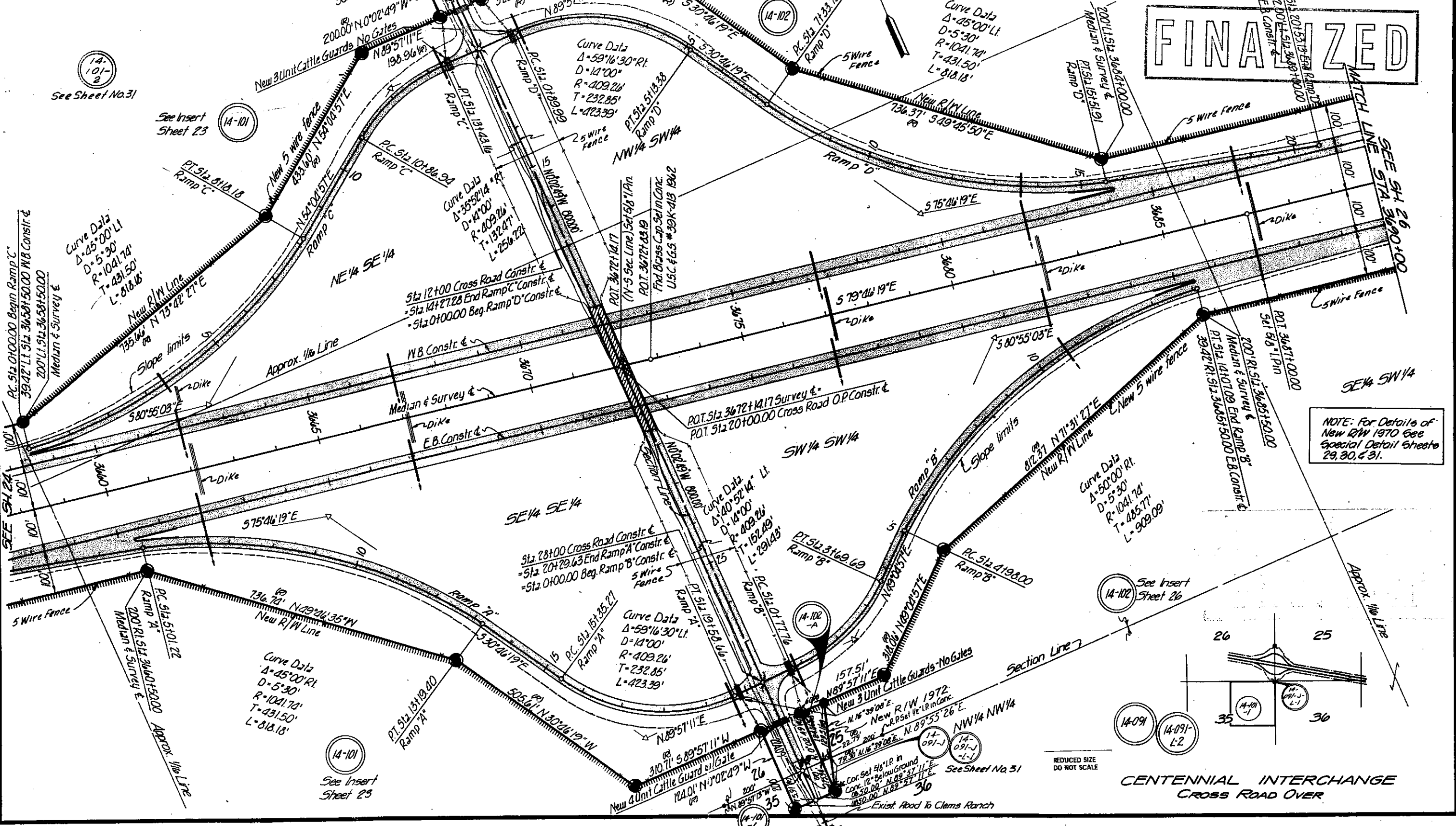


**EHRENBERG-PHOENIX HWY.  
LONE MTN. - MARICOPA CO. LINE  
YUMA COUNTY**

REVISIONS				PROJECT NO.
C.O. No.	DATE	BY	DESCRIPTION	1-10-1972 59
965	1-26-66	Ford	Added several Brags & Dist's (See C.O.)	DRAWING NO. D-14-T-335
986	2-9-66	J.L.R.	Change R/W at Ramp "A" Sta. 15+	SHEET NO. 25 of 38
1418	1-18-67	J.H.I.	Rounded Delta's in Second Ramps "B" & "C"	DRAWN BY J.E.
2012	7-28-70	E.T.	Added Note & Check Total sheet no.	DATE COMP. 12-23-65
3177	1-21-72	M.L.B.	Change R/W in Southeast Quadrant of "A" Ramp & indicate as New R/W 1972	SCALE 1"=100'
4546 52676 W.M.L.S. Final				CONSULTANT WILLIAMS & ELLIS

**FINALIZED**



NOTE: For Details of New R/W 1970 See Special Detail Sheets 29, 30, & 31.

See Insert Sheet 26

14-091 L-2

**CENTENNIAL INTERCHANGE  
CROSS ROAD OVER**

REDUCED SIZE  
DO NOT SCALE

CHECKED BY: [Signature]

HARD COPY: 6274 M17

See Sheet No. 31

See Insert Sheet 23

See Insert Sheet 23

See Sheet No. 31